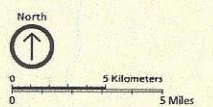
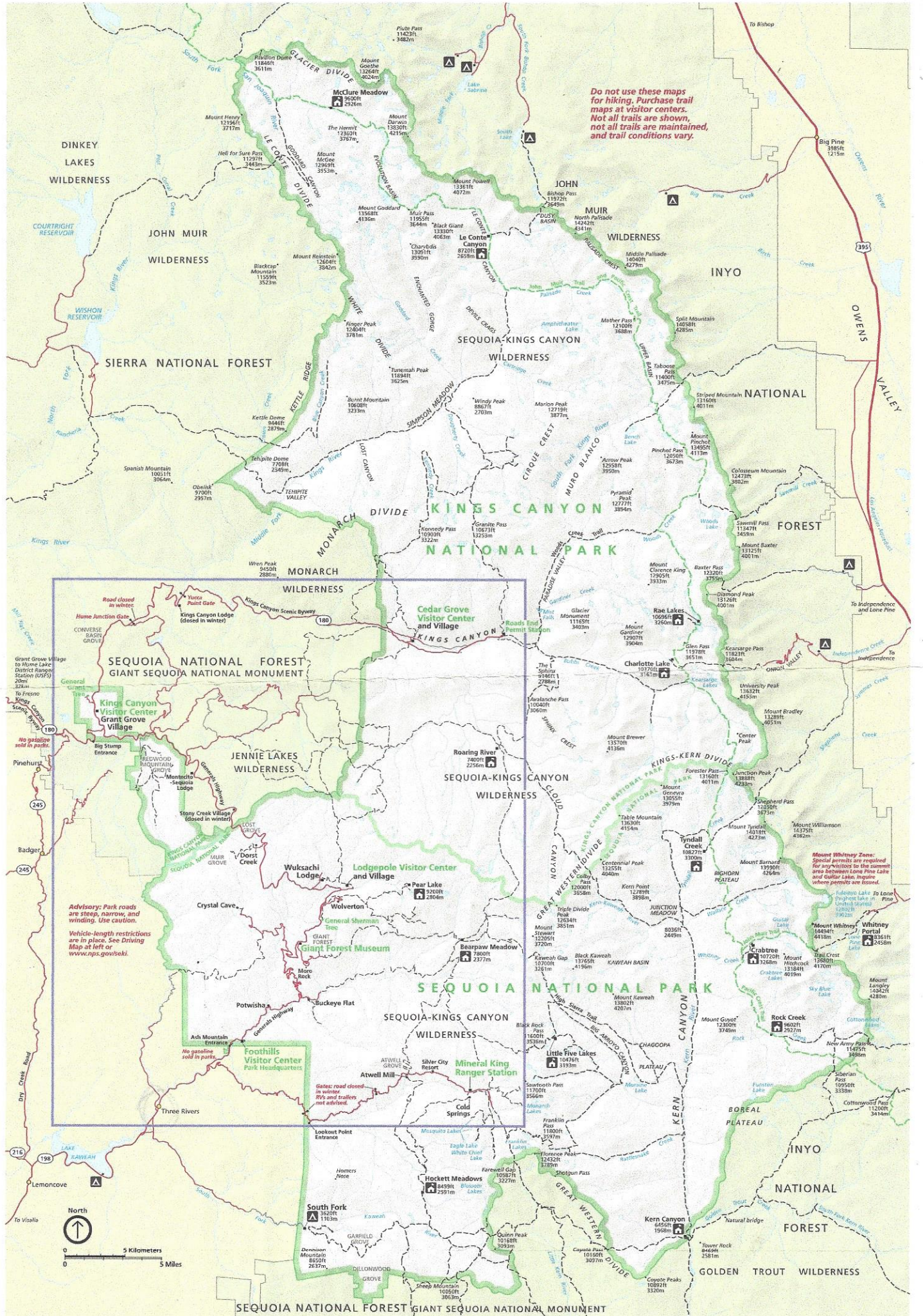


Do not use these maps for hiking. Purchase trail maps at visitor centers. Not all trails are shown, and trail conditions vary.



Mount Whitney Zone: Special permits are required for any visitors to the summit area between Lone Pine Lake and Guller Lakes, Inyo National Forest, where permits are issued.

Advisory: Park roads are steep, narrow, and winding. Use caution. Vehicle-length restrictions are in place. See Driving Map at left or www.nps.gov/seki.

No gasoline sold in parks.

Glacier road closed in winter. RVs and trailers not allowed.

Glacier road closed in winter. RVs and trailers not allowed.